



Tracing Time

An exhibition of works by

JEMMA
POWELL

LEAH
WOOD



TRACING TIME

In this dynamic exhibition, two distinct visions of passing time have been captured: Jemma Powell's vibrant and textural cityscapes, and Leah Wood's impressionistic vibrant landscapes. *Tracing Time* is a compelling exploration of how urban and natural environments shape our perception of space, time, and emotion within a fleeting moment captured in time. The juxtaposition of these two powerful perspectives invite the viewer to reflect on the contrasts and harmonies between the constructed and the organic, the hectic and the peaceful, the human and the natural.

Time, community, and generations are deeply intertwined forces that shape the landscapes we inhabit. Over time, communities evolve through the shared experiences and contributions of individuals, with each generation leaving its mark physically, culturally, and emotionally on the spaces they call home. These ever-evolving landscapes, both natural and created, become reflections of collective memory and effort. The chosen charity, TimeGivers, of which 10% of the profits will be donated to, is dedicated to connecting volunteers with meaningful opportunities, embody this spirit by fostering intergenerational support and community care.

By encouraging people to give their time, TimeGivers strengthens the social fabric, ensuring that future landscapes are not only functional but also filled with compassion, history, and a sense of belonging passed down through the generations.

TimeGivers was founded on the simple belief in the power of children to transform not just their own lives but the world around them. Their vision is bold but achievable: A future where all children have access to enriching volunteering opportunities to help them and their communities grow and change for the better. In less than two years, they have built something unique; a remarkable network of 7,529 young volunteers aged 4-18 whose dedication and passion form the beating heart of TimeGivers.

Their initiatives for the environment not only contribute to the preservation of local environments but also increase green spaces and protect local wildlife within urban settings. They bring art & nature into classrooms in order to highlight the importance of this. For young volunteers, these projects serve as educational platforms, imbuing them with a deep-rooted sense of environmental stewardship.

TimeGivers was the ideal charity to support for this show, as it beautifully mirrors the themes of the series—offering steadfast support to the community throughout the passage of time and life's journey.



JEMMA POWELL

Powell, often working en plein air, is known for her gestural oil paintings, where expressive brushwork and colour convey the immediacy and intensity of the experience of her surroundings. Once the first colour is laid on a canvas, the first shape is marked out in Powell's definitive, energetically charged brushstrokes with subsequent strokes following in conversation with one another.

Alongside her artistic practice, Powell is an accomplished actress with a career of nearly two decades, appearing in productions including Tim Burton's *Alice in Wonderland*, *Foyle's War*, *The Stranger*, *The Secret Garden* and *Devils*.

Powell studied Drama at Bristol University before completing a Diploma in Acting at The Oxford School of Drama. Her paintings have been widely exhibited across the UK, with three sell-out solo shows at Cricket Fine Art, London. Her work is held in numerous private collections in Europe, Australia and the US.

Powell lives in Oxfordshire with her husband, musician Jack Savoretti, their three children and four dogs. Creativity runs in the family: her mother, Lucy Powell, is also an artist, and her father is renowned product designer Dick Powell. Powell is an ambassador for the conservation charity, Tusk.



JEMMA POWELL



MOMENTS BETWEEN
MONUMENTS, 2024

Oil on Board
50 x 33cm | 19.7 x 12.9in

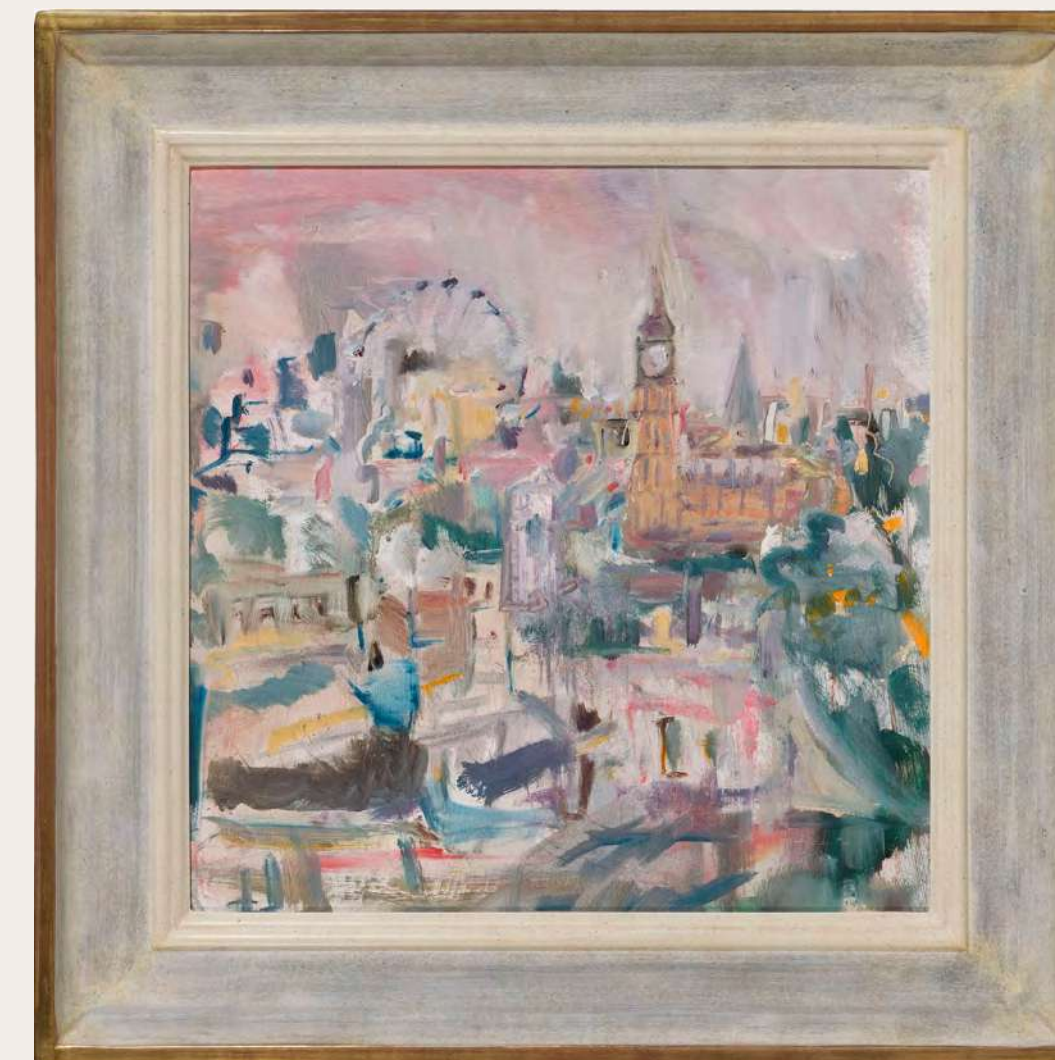
£2,100



A CITY HALF
REMEMBERED,
2024

Oil & Pastel on Board
49 x 47cm | 12.3 x 18.5in

£2,600



A MAP OF TIME,
2025

Oil & Pastel on Board
40 x 39cm | 15.7 x 15.4in

£2,200



ROSELIGHT, W8, 2024

Oil on Board

29 x 37cm | 11.4 x 14.6in

£2,000



HIGH PLACES HOLD SECRETS, 2024

Oil on Linen

19 x 35cm | 7.5 x 13.8in

£1,900



A CITY IN SILENCE,
2024

Oil on Board
23.5 x 38cm | 9.3 x 14.9in
£1,950



BEHIND THE
WINDOWS OF SOHO
IN SPRING,
2025

Oil on Linen
29 x 39.5cm | 11.4 x 15.6in
£2,000



WHERE THE WRITERS
WORK IN WINTER,
2025

Oil & Pastel on Linen
36 x 24cm | 14.2 X 9.4in
£1,900

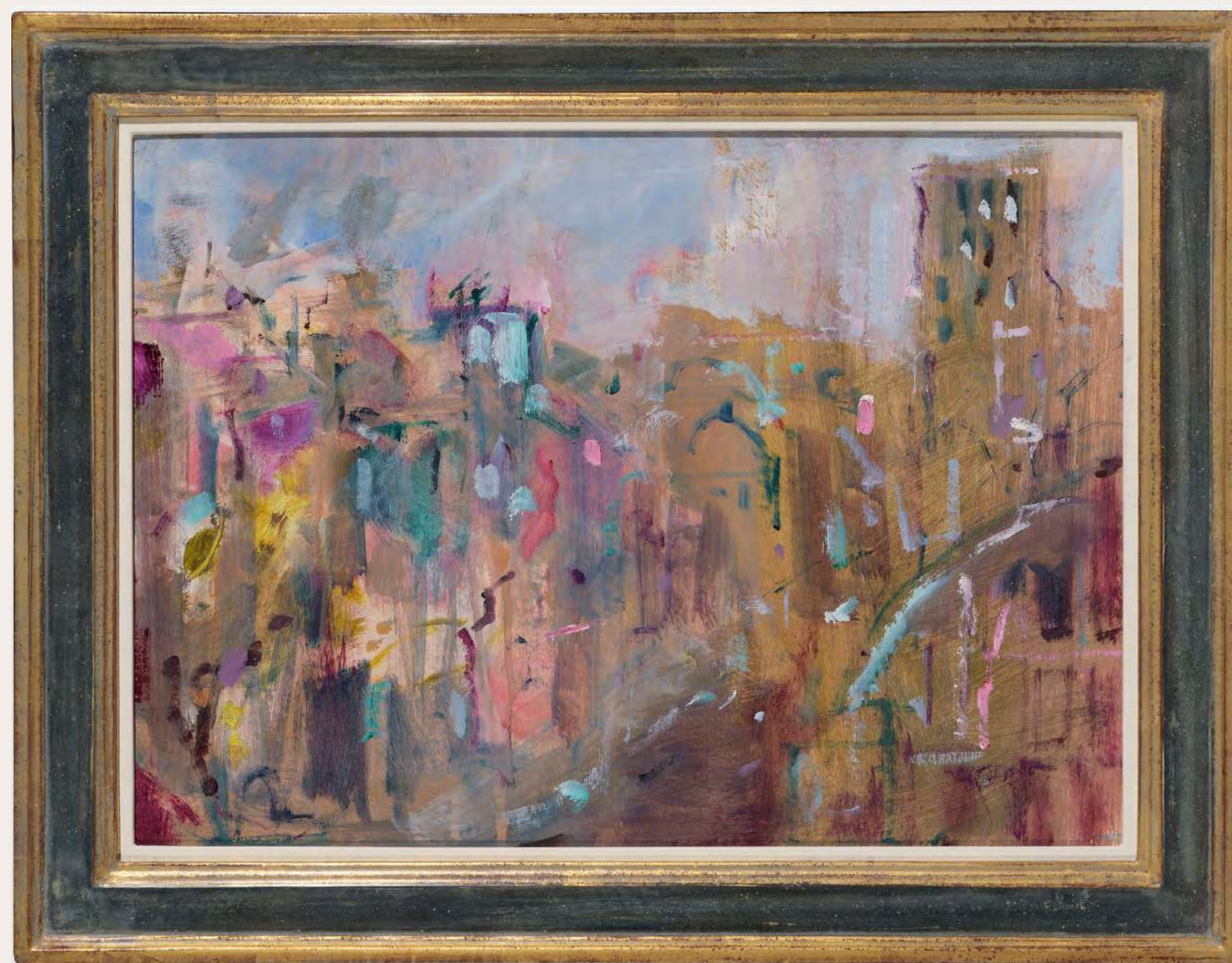


WHAT THE ROOF TOPS SEE, 2024

Oil on Board

18.5 x 49.5cm | 7.3 x 19.5in

£2,000



THE BRICKS OF BROADWICK
& BERWICK, 2025

Oil on Board
36 x 50cm | 14.2 x 19.7in
£2,300



TIME SPELLED IN STONE, 2024

Oil on Board
24 x 35cm | 9.4 x 13.8in
£1,900



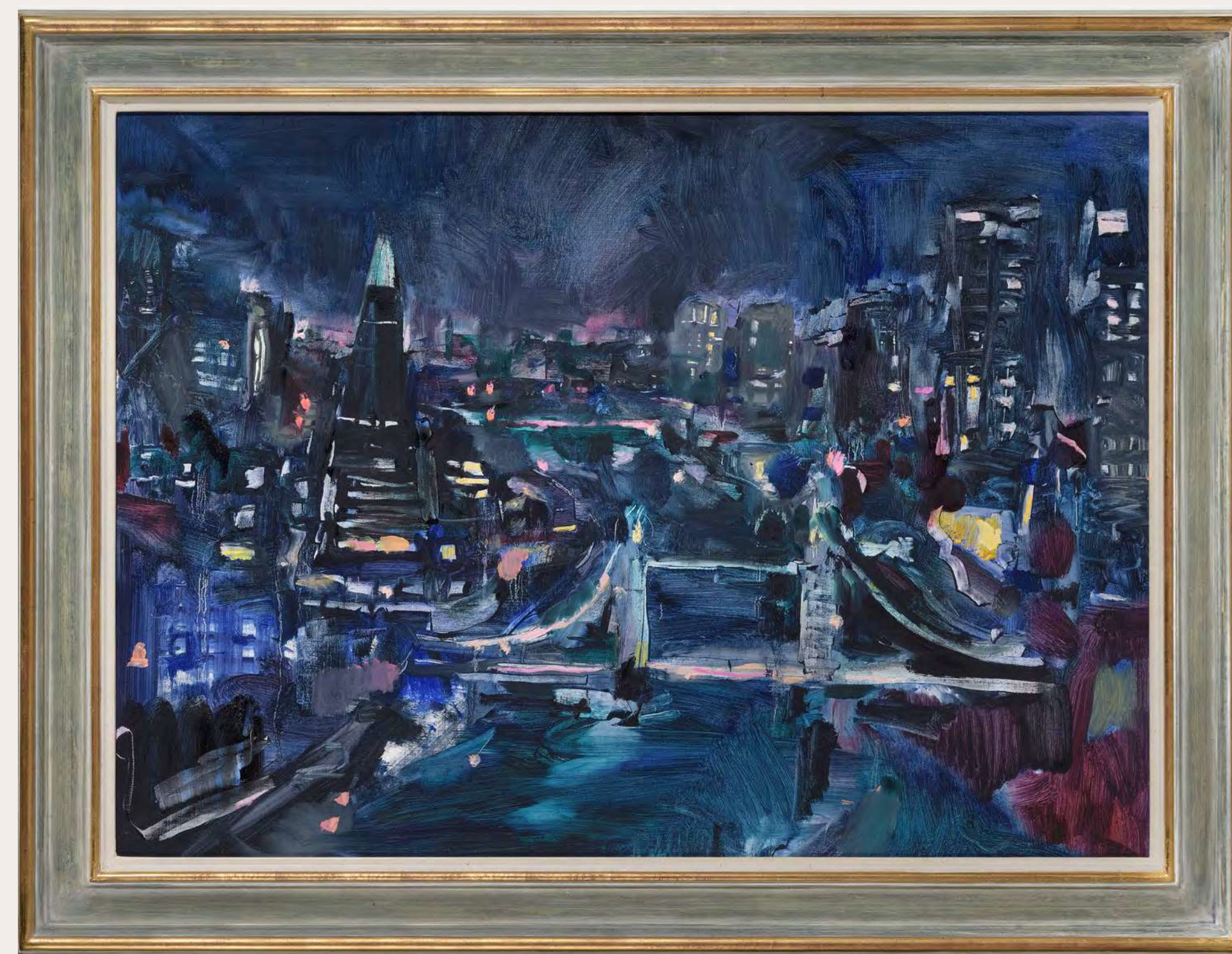
WINTER VEIL,
BERWICK ST, 2025

Oil on Linen
33.5 x 51cm | 13.2 x 20in
£2,100



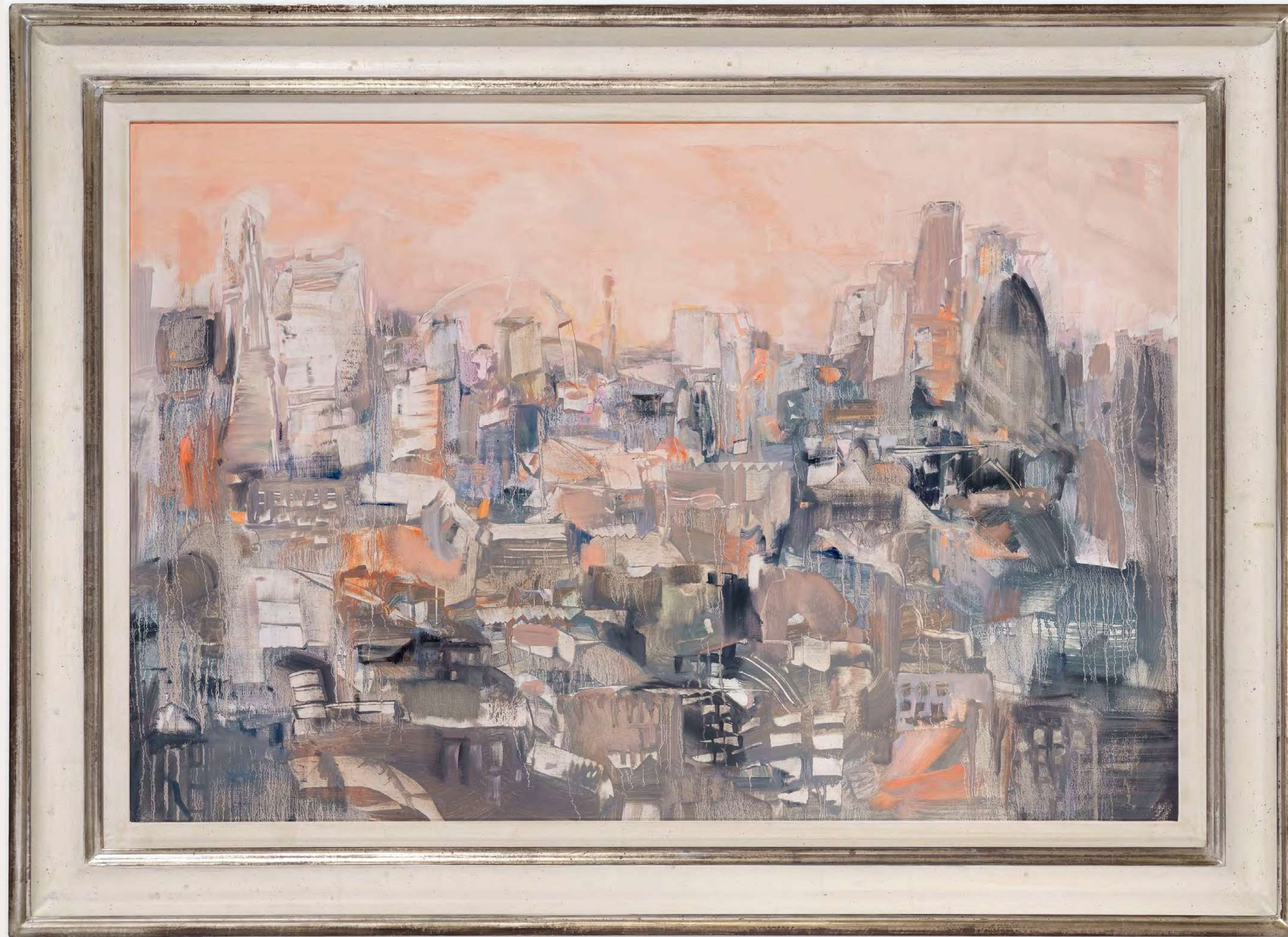
GLOWLINE, 2024

Oil on Linen
52 x 100cm | 20.5 x 39.4in
£4,900



LDN: 1AM, 2025

Oil on Linen
68 x 95cm | 26.8 x 37.4in
£5,900



THE GLASS CITY, 2025

Oil on Linen

64 x 96cm | 25.2 x 37.8

£5,600

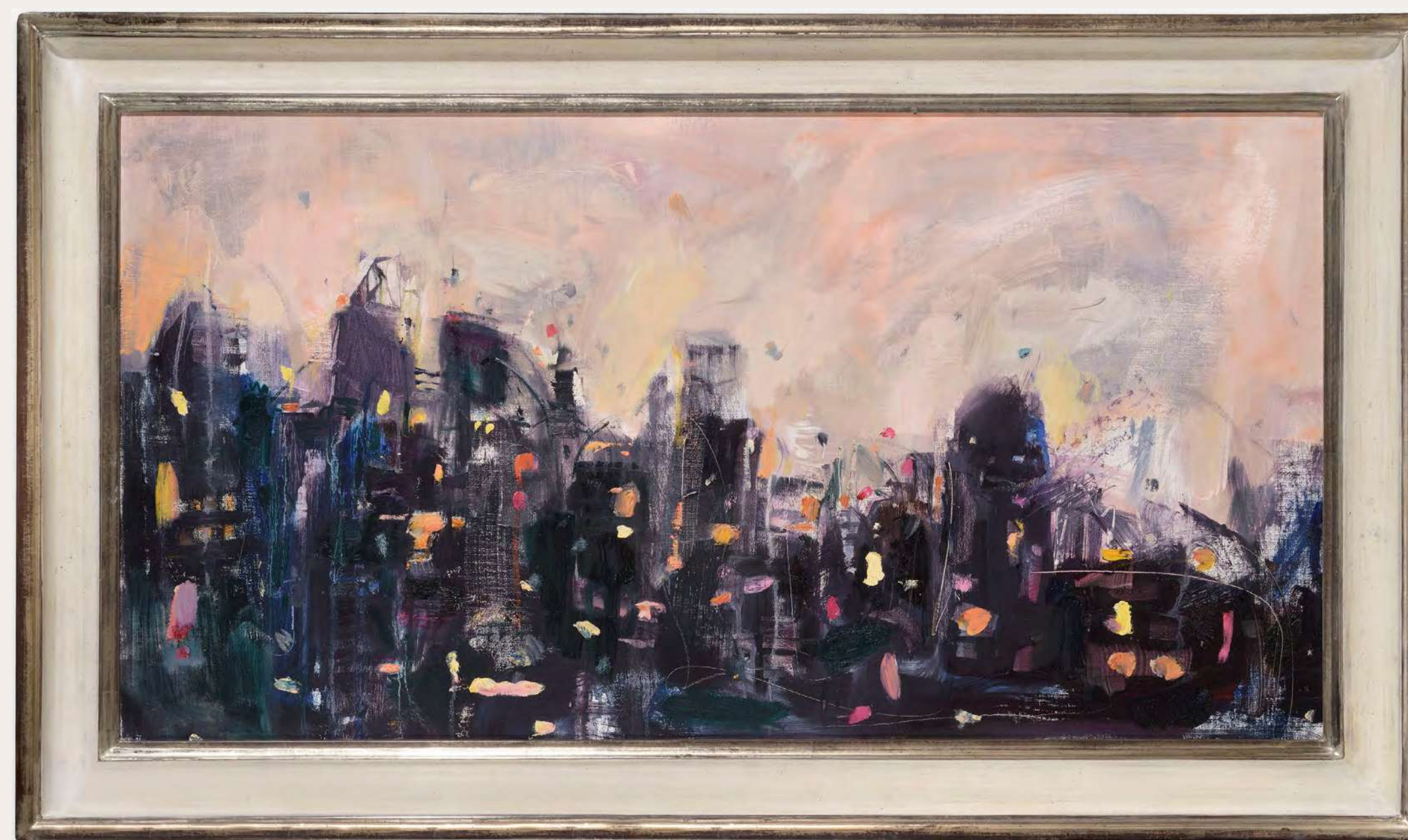


SOFT CITY, HARD EDGES, 2024

Oil on Board

57 x 60cm | 22.4 x 23.6in

£3,500



THE ARCHITECTURE OF DUSK, 2025

Oil on Board

52 x 98cm | 20.5 x 38.6in

£4,700



THE CITY LEFT ITS MARK, 2024

Oil on Linen
32 x 53cm | 12.6 x 20.9in
£2,200



FALLING FOR THE NIGHT SKY, 2025

Oil on Board
76 x 100cm | 29.9 x 39.4in
£6,700





LEAH WOOD

Leah Wood is a British artist and environmental activist whose work celebrates the beauty of nature while calling attention to the urgent need to protect endangered species and the planet. Her creative process blends construction, deconstruction, and reconstruction, producing layered, often multidimensional pieces that mirror both the richness and fragility of the natural world.

Immersed in music and art from an early age as the daughter of Rolling Stones guitarist and artist Ronnie Wood, Leah draws further inspiration from her extensive travels, her deep connection to nature, and her role as a mother of two. These influences fuel her artistic vision and her commitment to environmental advocacy.

Leah has exhibited internationally, including a 2024 pop-up at Nyn Esti at the Museum of Contemporary Art in Athens, a 2023 solo show at London's Linley Gallery to critical acclaim, and participation in *One Planet, One Chance*, for the Queen's Jubilee (2022). She was also featured in *The Future Is Female* at London's Garrison Chapel.

Her earlier projects include West Contemporary's *The Devil's Fugue* (2019) in Covent Garden, curating the *NOW Exhibition* in London (2020), and a landmark 2018 commission for the Mandarin Oriental Hotel in Hyde Park, where she painted more than 100 English butterflies for the Butterfly Terrace.

A graduate of Chelsea College of Art and Design, Leah Wood has rapidly built a global following. Her works are held in prestigious collections worldwide, and she is recognized not only for her distinctive artistic voice but also for her advocacy on behalf of the environment.



WINTER TREE ABSTRACT I,
2025

Acrylic On Canvas
26 x 30cm | 10.2 x 11.8in

£1,900



WINTER TREE ABSTRACT II,
2025

Acrylic On Canvas
26 x 30cm | 10.2 x 11.8in

£1,900



WINTER TREE ABSTRACT III,
2025

Acrylic On Canvas
26 x 30cm | 10.2 x 11.8in

£1,900



WINTER OAK, 2025

Charcoal On Canvas
161 x 129cm | 63.4 x 50.7in
£15,000



WINTER TREE
ABSTRACT IV, 2025

Acrylic On Canvas
33 x 43cm | 12.9 x 16.9in
£2,200



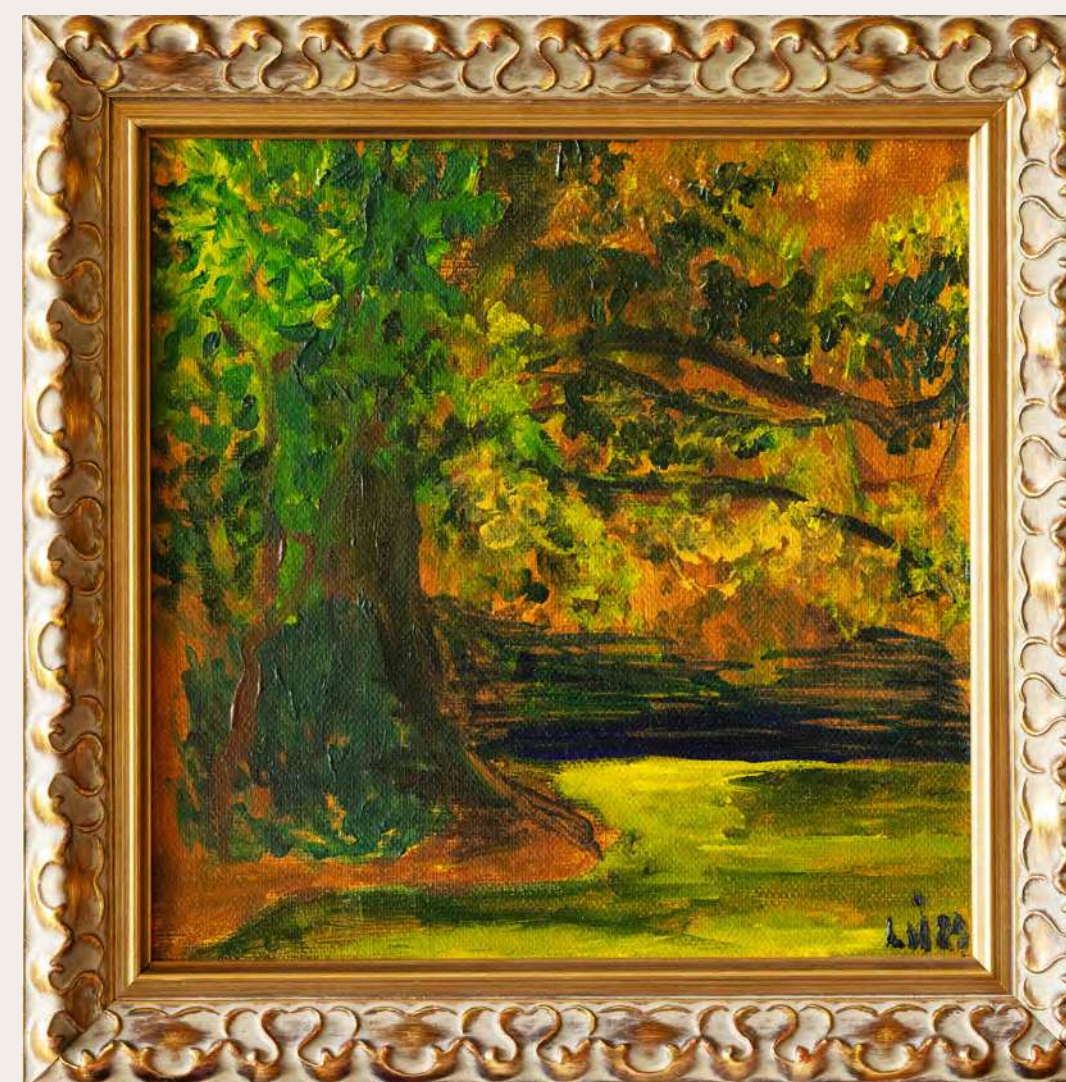
WINTER TREE
ABSTRACT V, 2025

Acrylic On Canvas
33 x 43cm | 12.9 x 16.9in
£2,200



GARDEN STUDY, 2025

Acrylic On Canvas
48 x 43cm | 18.9 x 16.9in
£2,800



DARK OAK, 2025

Acrylic On Canvas
24 x 24cm | 9.4 x 9.4in
£2,200



LANDSCAPE IN EARLY SPRING,
2025

Acrylic On Canvas
45 x 36cm | 17.7 x 14.2in
£2,500



AUTUMN IN THE GARDEN, 2025

Acrylic On Canvas

121 x 106cm | 47.6 x 41.7in

£12,400



GARDEN IN EXPRESSION, I,
2025

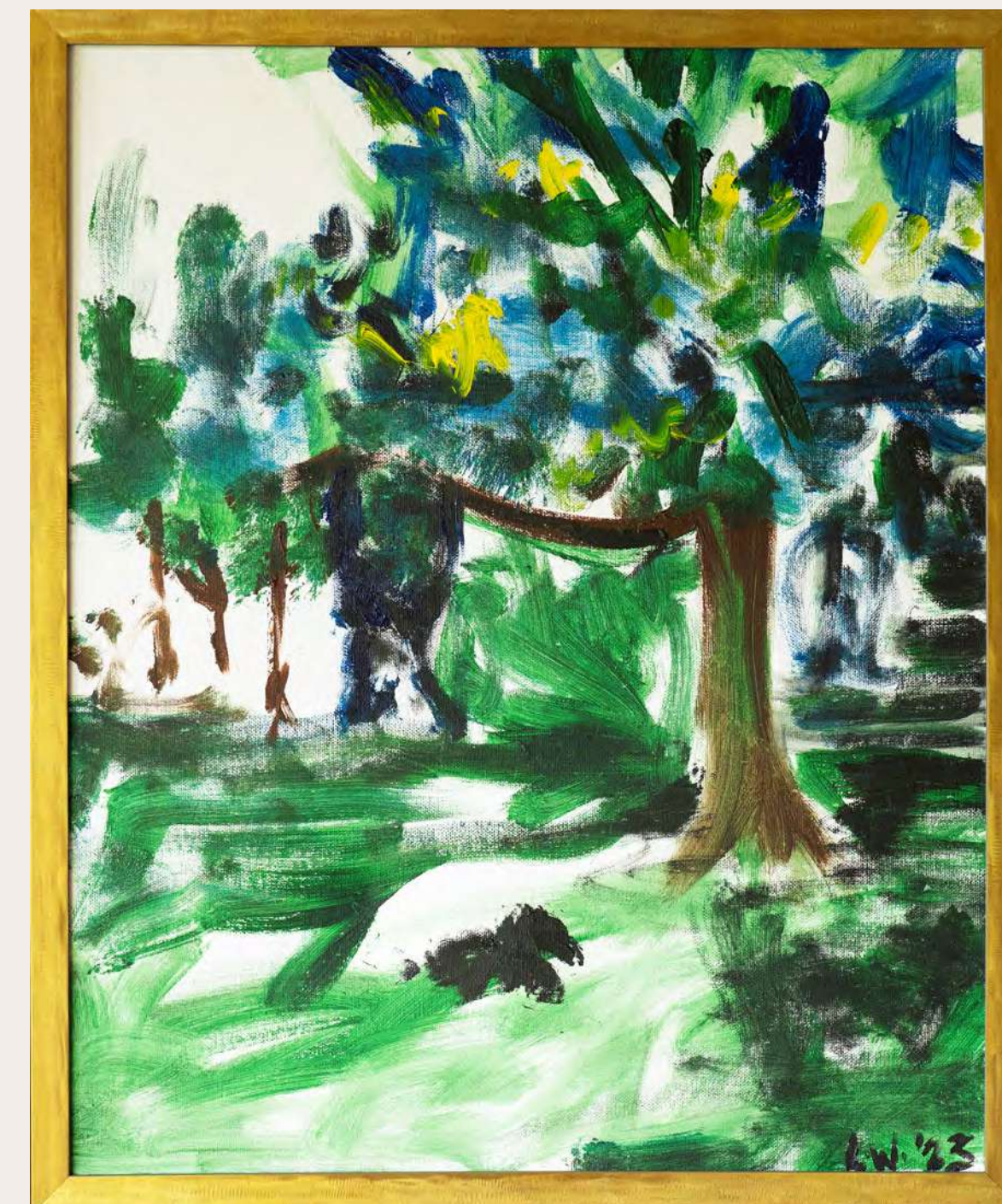
Acrylic On Canvas
49 x 57cm | 19.3 x 22.4in

TRIPTYCH £8,500



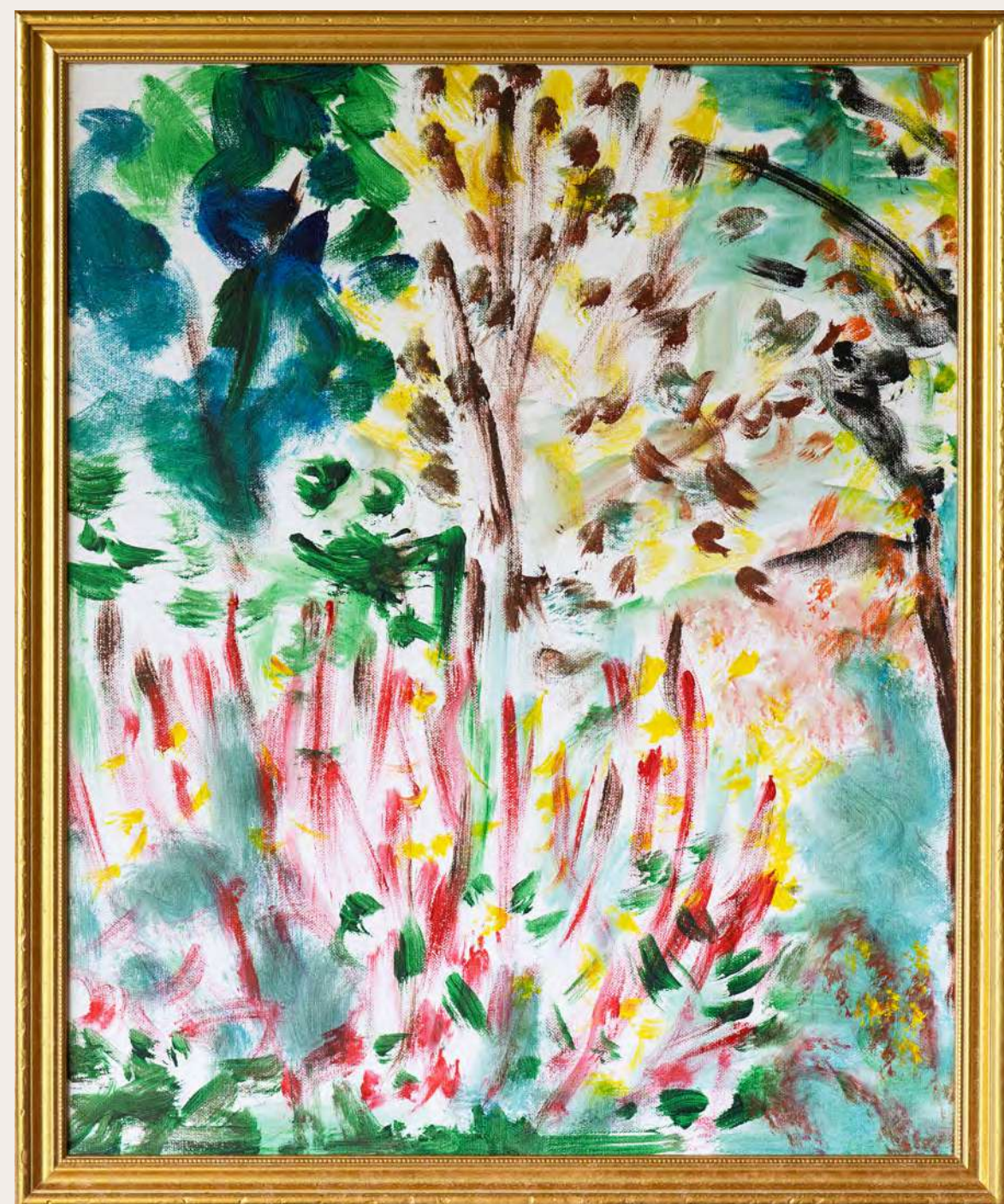
GARDEN IN EXPRESSION, II,
2025

Acrylic On Canvas
49 x 57cm | 19.3 x 22.4in



GARDEN IN EXPRESSION, III,
2025

Acrylic On Canvas
49 x 57cm | 19.3 x 22.4in



GREENS & REDS IN THE
GARDEN, I, 2025

Acrylic On Canvas
49 x 64cm | 19.3 x 25.2in

TRIPTYCH £9,500



GREENS & REDS IN THE
GARDEN, II, 2025

Acrylic On Canvas
49 x 64cm | 19.3 x 25.2in



GREENS & REDS IN THE
GARDEN, III, 2025

Acrylic On Canvas
49 x 64cm | 19.3 x 25.2in



DAFFODILS, 2025

Acrylic On Canvas
56 x 67cm | 22 x 26.4in

£3,900



POPPY SEED PODS, 2025

Acrylic On Canvas
55 x 57cm | 21.7 x 22.4in

£3,600



ROSES, 2025

Acrylic On Canvas
60 x 69cm | 23.6 x 27.2in

£3,900



PRUNUS CERASUS, 2025

Acrylic On Canvas
100 x 100cm | 39.4 x 39.4in

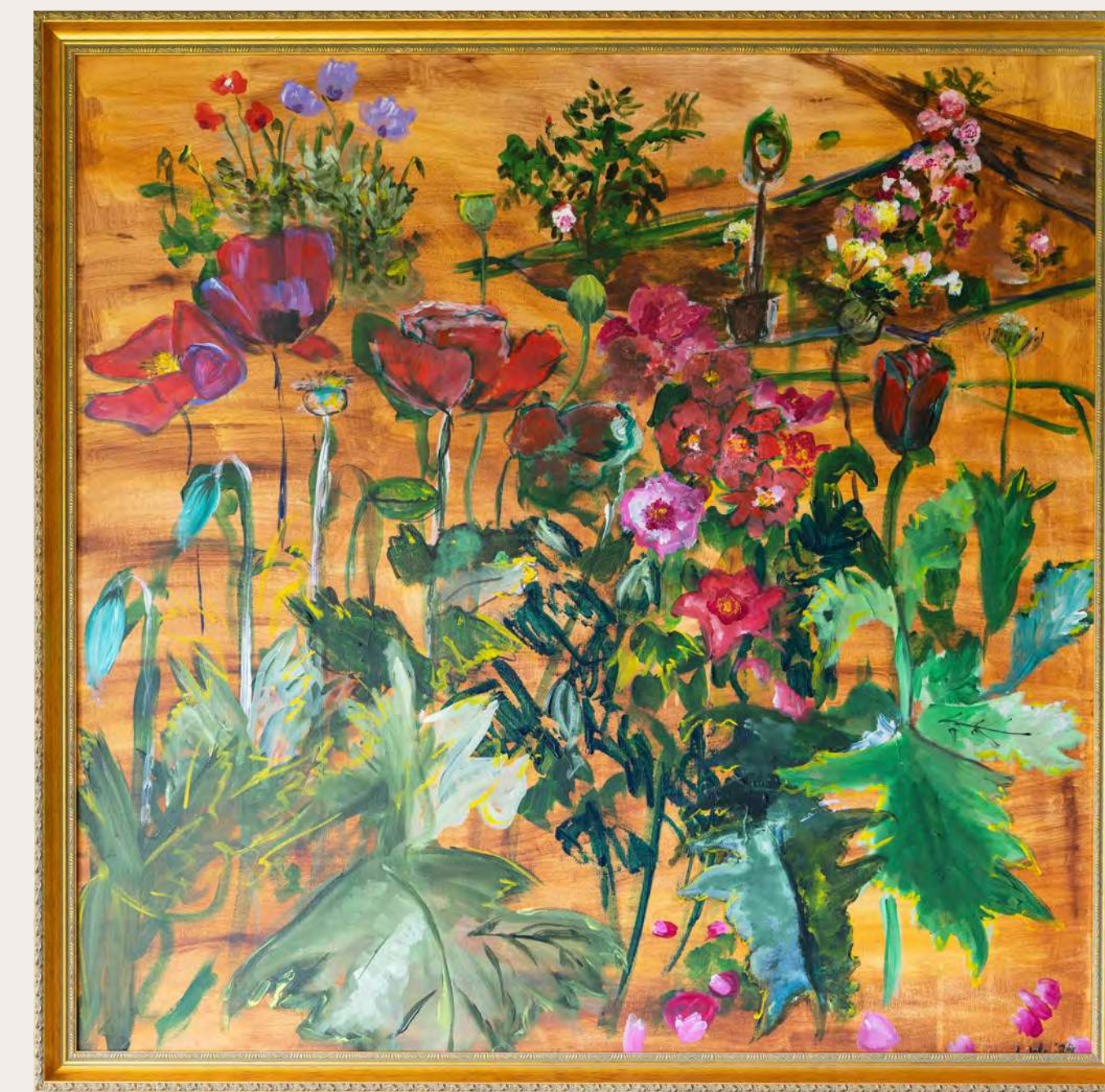
£9,400



PINK ROSE BED, 2025

Acrylic On Canvas
57 x 57cm | 22 x 22in

£3,600



SUMMER IN THE GARDEN, 2025

Acrylic On Canvas
100 x 100cm | 39.4 x 39.4in

£9,400



CHERRY BLOSSOM TREE
(PINK), 2025

Acrylic On Canvas
58 x 67 cm | 22.8 x 26.4 in
£3,900



CHERRY TREE IN BLOOM, 2025

Acrylic On Canvas
62 x 74cm | 24.4 x 29.1in
£4,600



GOLDEN, 2025

Acrylic On Canvas
33 x 42cm | 12.9 x 16.5in
£2,400



AUTUMN OAK, 2025

Acrylic On Canvas

50 x 59cm | 19.7 x 23.2in

£3,400

FOR FURTHER INFORMATION ON ARTWORKS,
COMMISSIONS & COLLABORATIONS
PLEASE CONTACT US ON THE BELOW

Email: charlotte@hccontemporary.com

Website: www.hccontemporary.com

Phone: +44 (0) 207 126 8193

Instagram: [@powell.jemma.art](https://www.instagram.com/powell.jemma.art) [@leahwoodartwork](https://www.instagram.com/leahwoodartwork)



CONTEMPORARY